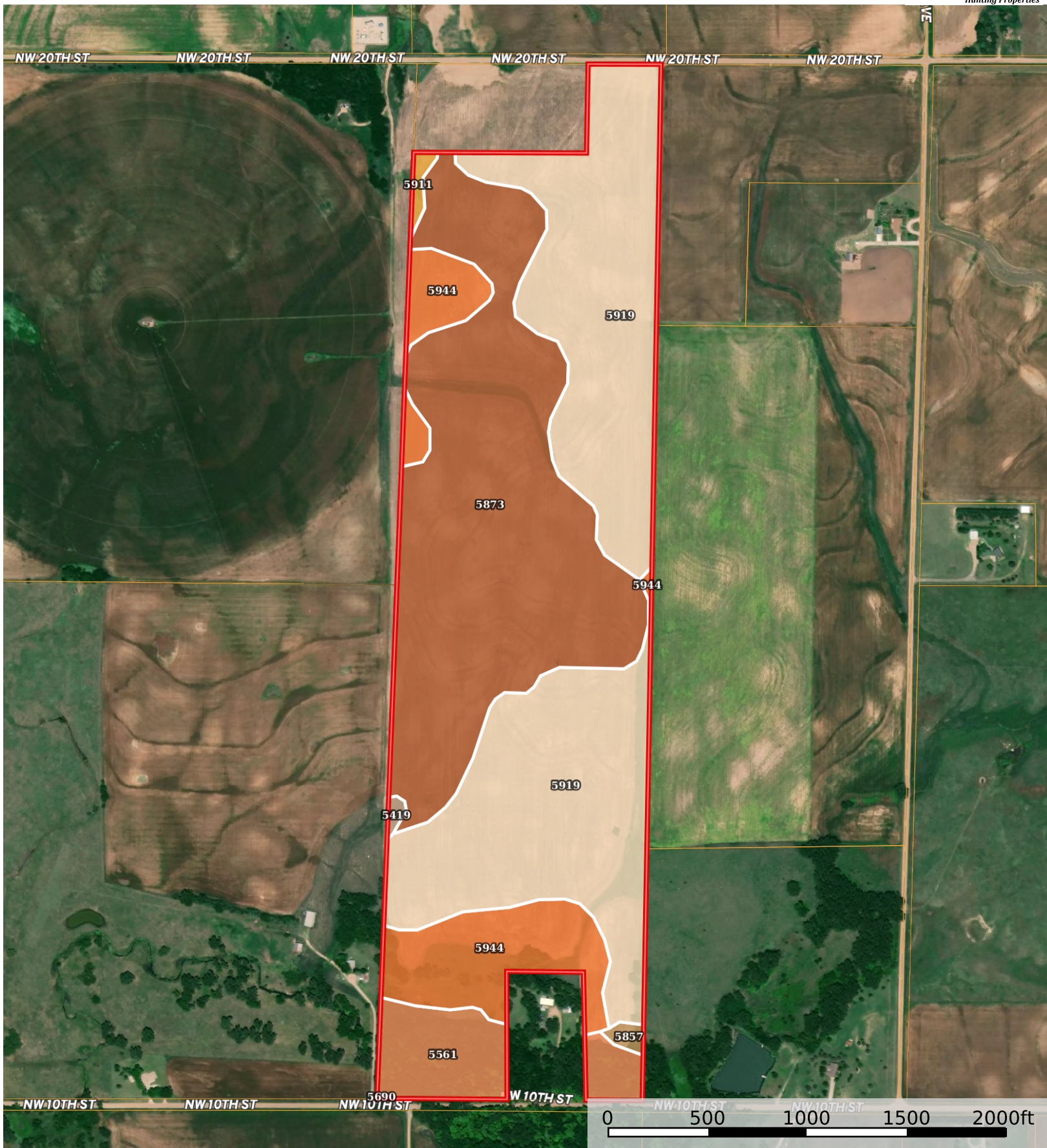


Kanza Coop Dryland and Trees

Pratt County, Kansas, 140 AC +/-



 Boundary

Boundary 139.56 ac

SOIL CODE	SOIL DESCRIPTION	ACRES	%	CPI	NCCPI	CAP
5919	Ost clay loam, 1 to 3 percent slopes	61.58	44.13	0	69	2e
5873	Clark clay loam, 1 to 3 percent slopes	52.43	37.57	0	66	3e
5944	Saltcreek and Naron fine sandy loams, 1 to 3 percent slopes	15.41	11.04	0	57	2e
5561	Kanza-Plevna complex, frequently flooded	8.67	6.21	0	23	5w
5911	Naron fine sandy loam, 3 to 7 percent slopes	0.61	0.44	0	59	3e
5857	Albion-Kaski complex, 0 to 15 percent slopes	0.54	0.39	0	50	3e
5419	Case-Clark clay loams, 3 to 7 percent slopes	0.3	0.21	0	63	4e
5690	Zenda clay loam, occasionally flooded	0.02	0.01	0	77	2w
TOTALS		139.56(*)	100%	-	63.57	2.57

(*) Total acres may differ in the second decimal compared to the sum of each acreage soil. This is due to a round error because we only show the acres of each soil with two decimal.

