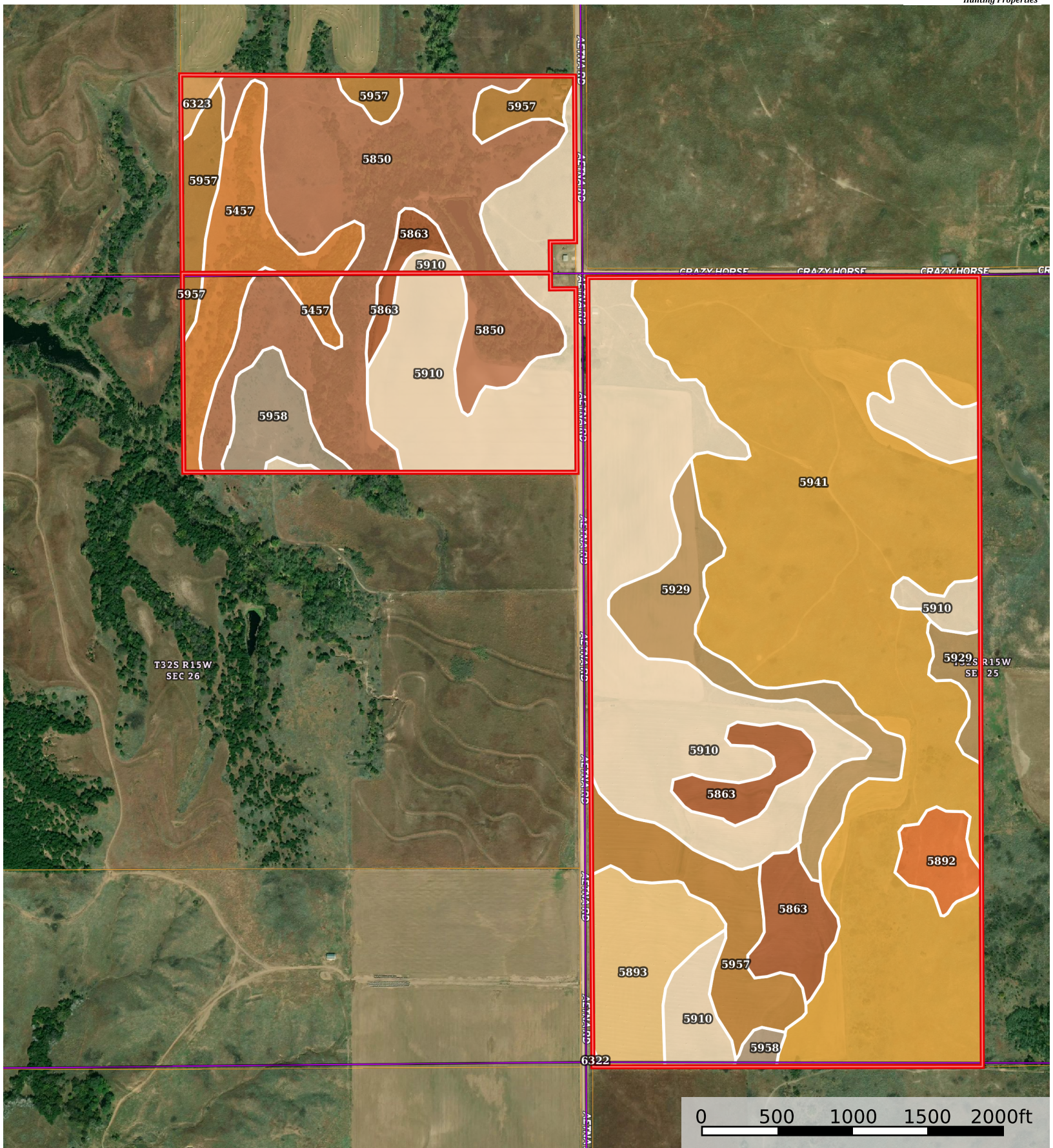


Cline - Deerhead - Barber Co

Barber County, Kansas, 469 AC +/-



 All Polygons 468.6 ac

SOIL CODE	SOIL DESCRIPTION	ACRES	%	CPI	NCCPI	CAP
5941	Pratt-Tivoli loamy fine sands, 5 to 15 percent slopes	153.3	32.71	0	25	6e
5910	Naron fine sandy loam, 1 to 3 percent slopes	117.2 3	25.02	0	49	3e
5850	Albion and Shellabarger sandy loams, 6 to 15 percent slopes	69.37	14.8	0	41	6e
5957	Shellabarger sandy loam, 3 to 6 percent slopes	29.41	6.28	0	50	3e
5929	Pratt loamy fine sand, 5 to 12 percent slopes	24.06	5.13	0	31	4e
5457	Quinlan-Woodward loams, 6 to 15 percent slopes	21.14	4.51	0	25	6e
5863	Attica loamy fine sand, 1 to 3 percent slopes	18.88	4.03	0	39	3e
5893	Farnum loam, 1 to 3 percent slopes	17.38	3.71	0	61	2e
5958	Shellabarger sandy loam, 3 to 6 percent slopes, eroded	10.15	2.17	0	47	3e
5892	Farnum loam, 0 to 1 percent slopes	6.07	1.3	0	61	1
6323	Blanket silt loam, 1 to 3 percent slopes	1.53	0.33	0	63	2e
6322	Blanket silt loam, 0 to 1 percent slopes	0.08	0.02	0	64	2c
TOTALS		468.6(*)	100%	-	38.22	4.55

(*) Total acres may differ in the second decimal compared to the sum of each acreage soil. This is due to a round error because we only show the acres of each soil with two decimal.

 Boundary 311.87 ac

SOIL CODE	SOIL DESCRIPTION	ACRES	%	CPI	NCCPI	CAP
5941	Pratt-Tivoli loamy fine sands, 5 to 15 percent slopes	153.3	49.15	0	25	6e
5910	Naron fine sandy loam, 1 to 3 percent slopes	77.64	24.89	0	49	3e
5929	Pratt loamy fine sand, 5 to 12 percent slopes	24.06	7.71	0	31	4e
5893	Farnum loam, 1 to 3 percent slopes	17.38	5.57	0	61	2e
5957	Shellabarger sandy loam, 3 to 6 percent slopes	16.71	5.36	0	50	3e
5863	Attica loamy fine sand, 1 to 3 percent slopes	15.19	4.87	0	39	3e
5892	Farnum loam, 0 to 1 percent slopes	6.07	1.95	0	61	1
5958	Shellabarger sandy loam, 3 to 6 percent slopes, eroded	1.44	0.46	0	47	3e
6322	Blanket silt loam, 0 to 1 percent slopes	0.08	0.03	0	64	2c
TOTALS		311.8 7(*)	100%	-	36.28	4.46

(*) Total acres may differ in the second decimal compared to the sum of each acreage soil. This is due to a round error because we only show the acres of each soil with two decimal.

 Boundary 78.82 ac

SOIL CODE	SOIL DESCRIPTION	ACRES	%	CPI	NCCPI	CAP
5910	Naron fine sandy loam, 1 to 3 percent slopes	29.65	37.62	0	49	3e

5850	Albion and Shellabarger sandy loams, 6 to 15 percent slopes	28.63	36.32	0	41	6e
5457	Quinlan-Woodward loams, 6 to 15 percent slopes	9.36	11.88	0	25	6e
5958	Shellabarger sandy loam, 3 to 6 percent slopes, eroded	8.71	11.05	0	47	3e
5863	Attica loamy fine sand, 1 to 3 percent slopes	1.48	1.88	0	39	3e
5957	Shellabarger sandy loam, 3 to 6 percent slopes	0.99	1.26	0	50	3e
TOTALS		78.82(*)	100%	-	42.85	4.45

(*) Total acres may differ in the second decimal compared to the sum of each acreage soil. This is due to a round error because we only show the acres of each soil with two decimal.

 Boundary 77.91 ac

SOIL CODE	SOIL DESCRIPTION	ACRES	%	CPI	NCCPI	CAP
5850	Albion and Shellabarger sandy loams, 6 to 15 percent slopes	40.74	52.28	0	41	6e
5457	Quinlan-Woodward loams, 6 to 15 percent slopes	11.78	15.12	0	25	6e
5957	Shellabarger sandy loam, 3 to 6 percent slopes	11.71	15.03	0	50	3e
5910	Naron fine sandy loam, 1 to 3 percent slopes	9.94	12.76	0	49	3e
5863	Attica loamy fine sand, 1 to 3 percent slopes	2.21	2.84	0	39	3e
6323	Blanket silt loam, 1 to 3 percent slopes	1.53	1.96	0	63	2e
TOTALS		77.91(*)	100%	-	41.32	5.0









(*) Total acres may differ in the second decimal compared to the sum of each acreage soil. This is due to a round error because we only show the acres of each soil with two decimal.

Capability Legend

Increased Limitations and Hazards

Decreased Adaptability and Freedom of Choice Users

Land, Capability

								
	1	2	3	4	5	6	7	8
'Wild Life'	•	•	•	•	•	•	•	•
Forestry	•	•	•	•	•	•	•	
Limited	•	•	•	•	•	•	•	
Moderate	•	•	•	•	•	•		
Intense	•	•	•	•	•			
Limited	•	•	•	•				
Moderate	•	•	•					
Intense	•	•						
Very Intense	•							

Grazing Cultivation

(c) climatic limitations (e) susceptibility to erosion

(s) soil limitations within the rooting zone (w) excess of water