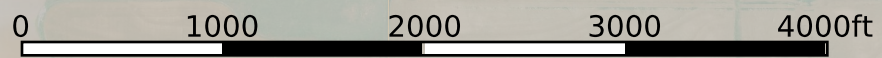
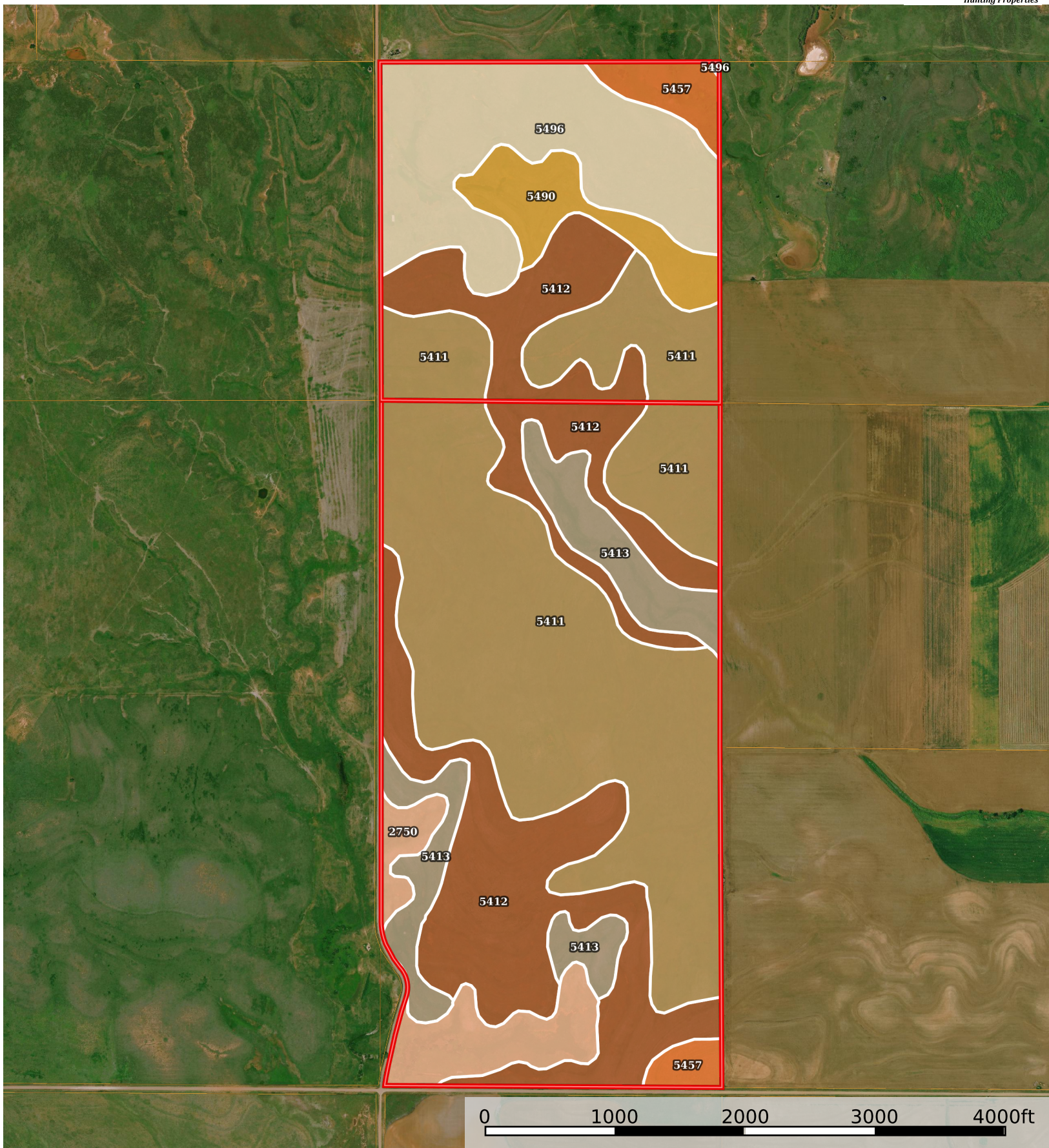


Murphey ETAL CRP Land

Clark County, Kansas, 473 AC +/-



 Boundary

 All Polygons 470.03 ac

SOIL CODE	SOIL DESCRIPTION	ACRES	%	CPI	NCCPI	CAP
5411	Carey silt loam, 0 to 1 percent slopes	190.7 1	40.57	0	54	2s
5412	Carey silt loam, 1 to 3 percent slopes	121.2 8	25.8	0	52	2e
5496	Woodward-Quinlan complex, 3 to 5 percent slopes	64.96	13.82	0	32	3s
5413	Carey silt loam, 3 to 5 percent slopes	35.87	7.63	0	50	3e
2750	Penden clay loam, 7 to 15 percent slopes	24.78	5.27	0	59	6e
5490	Woodward loam, 1 to 3 percent slopes	19.62	4.17	0	35	3s
5457	Quinlan-Woodward loams, 6 to 15 percent slopes	12.81	2.73	0	25	6e
TOTALS		470.0 3(*)	100%	-	48.82	2.58

(*) Total acres may differ in the second decimal compared to the sum of each acreage soil. This is due to a round error because we only show the acres of each soil with two decimal.

 Boundary 156.76 ac

SOIL CODE	SOIL DESCRIPTION	ACRES	%	CPI	NCCPI	CAP
5496	Woodward-Quinlan complex, 3 to 5 percent slopes	64.96	41.44	0	32	3s
5411	Carey silt loam, 0 to 1 percent slopes	35.08	22.38	0	54	2s
5412	Carey silt loam, 1 to 3 percent slopes	28.56	18.22	0	52	2e
5490	Woodward loam, 1 to 3 percent slopes	19.62	12.52	0	35	3s
5457	Quinlan-Woodward loams, 6 to 15 percent slopes	8.54	5.45	0	25	6e
TOTALS		156.7 6(*)	100%	-	40.56	2.76

(*) Total acres may differ in the second decimal compared to the sum of each acreage soil. This is due to a round error because we only show the acres of each soil with two decimal.

 Boundary 313.27 ac

SOIL CODE	SOIL DESCRIPTION	ACRES	%	CPI	NCCPI	CAP
5411	Carey silt loam, 0 to 1 percent slopes	155.6 3	49.68	0	54	2s
5412	Carey silt loam, 1 to 3 percent slopes	92.72	29.6	0	52	2e
5413	Carey silt loam, 3 to 5 percent slopes	35.87	11.45	0	50	3e
2750	Penden clay loam, 7 to 15 percent slopes	24.78	7.91	0	59	6e
5457	Quinlan-Woodward loams, 6 to 15 percent slopes	4.27	1.36	0	25	6e
TOTALS		313.2 7(*)	100%	-	52.95	2.49









(*) Total acres may differ in the second decimal compared to the sum of each acreage soil. This is due to a round error because we only show the acres of each soil with two decimal.

Capability Legend

Increased Limitations and Hazards

Decreased Adaptability and Freedom of Choice Users

Land, Capability

								
	1	2	3	4	5	6	7	8
'Wild Life'	•	•	•	•	•	•	•	•
Forestry	•	•	•	•	•	•	•	
Limited	•	•	•	•	•	•	•	
Moderate	•	•	•	•	•	•		
Intense	•	•	•	•	•			
Limited	•	•	•	•				
Moderate	•	•	•					
Intense	•	•						
Very Intense	•							

Grazing Cultivation

(c) climatic limitations (e) susceptibility to erosion

(s) soil limitations within the rooting zone (w) excess of water