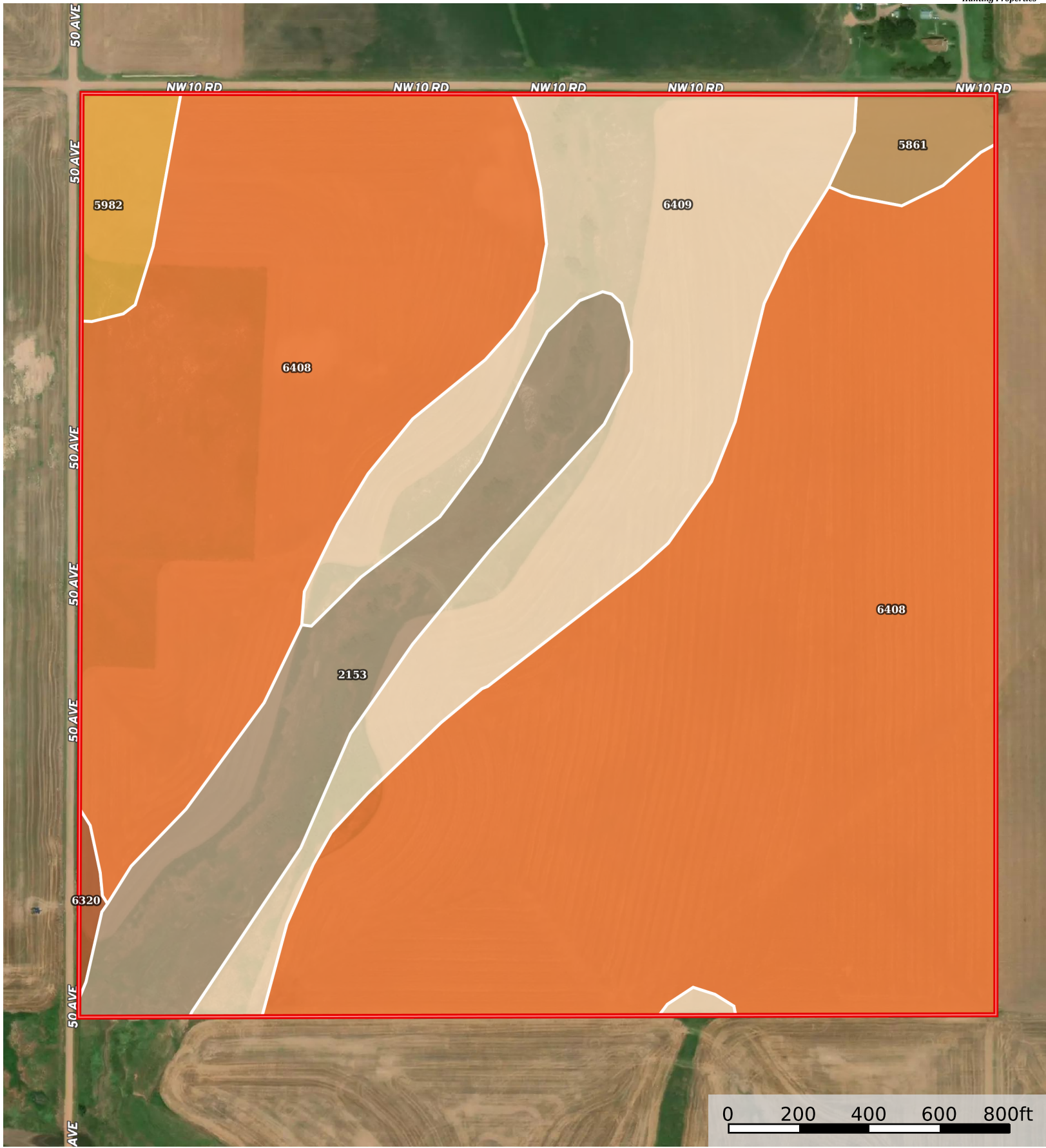



Kansas, AC +/-



 Boundary

Boundary 157.37 ac

SOIL CODE	SOIL DESCRIPTION	ACRES	%	CPI	NCCPI	CAP
6408	Pond Creek silt loam, 0 to 1 percent slopes	107.29	68.18	0	67	1
6409	Pond Creek silt loam, 1 to 3 percent slopes	28.52	18.12	0	67	1
2153	Lesho clay loam, saline, occasionally flooded	15.23	9.68	0	44	6s
5982	Nalim loam, 1 to 3 percent slopes	3.24	2.06	0	68	2e
5861	Attica fine sandy loam, 1 to 3 percent slopes	2.55	1.62	0	52	2e
6320	Bethany silt loam, 0 to 1 percent slopes	0.54	0.34	0	54	2s
TOTALS		157.37(*)	100%	-	64.51	1.52

(*) Total acres may differ in the second decimal compared to the sum of each acreage soil. This is due to a round error because we only show the acres of each soil with two decimal.

Capability Legend

Increased Limitations and Hazards

Decreased Adaptability and Freedom of Choice Users

Land, Capability

	1	2	3	4	5	6	7	8
'Wild Life'	•	•	•	•	•	•	•	•
Forestry	•	•	•	•	•	•	•	
Limited	•	•	•	•	•	•	•	
Moderate	•	•	•	•	•	•		
Intense	•	•	•	•	•			
Limited	•	•	•	•				
Moderate	•	•	•					
Intense	•	•						
Very Intense	•							

Grazing Cultivation

(c) climatic limitations (e) susceptibility to erosion

(s) soil limitations within the rooting zone (w) excess of water