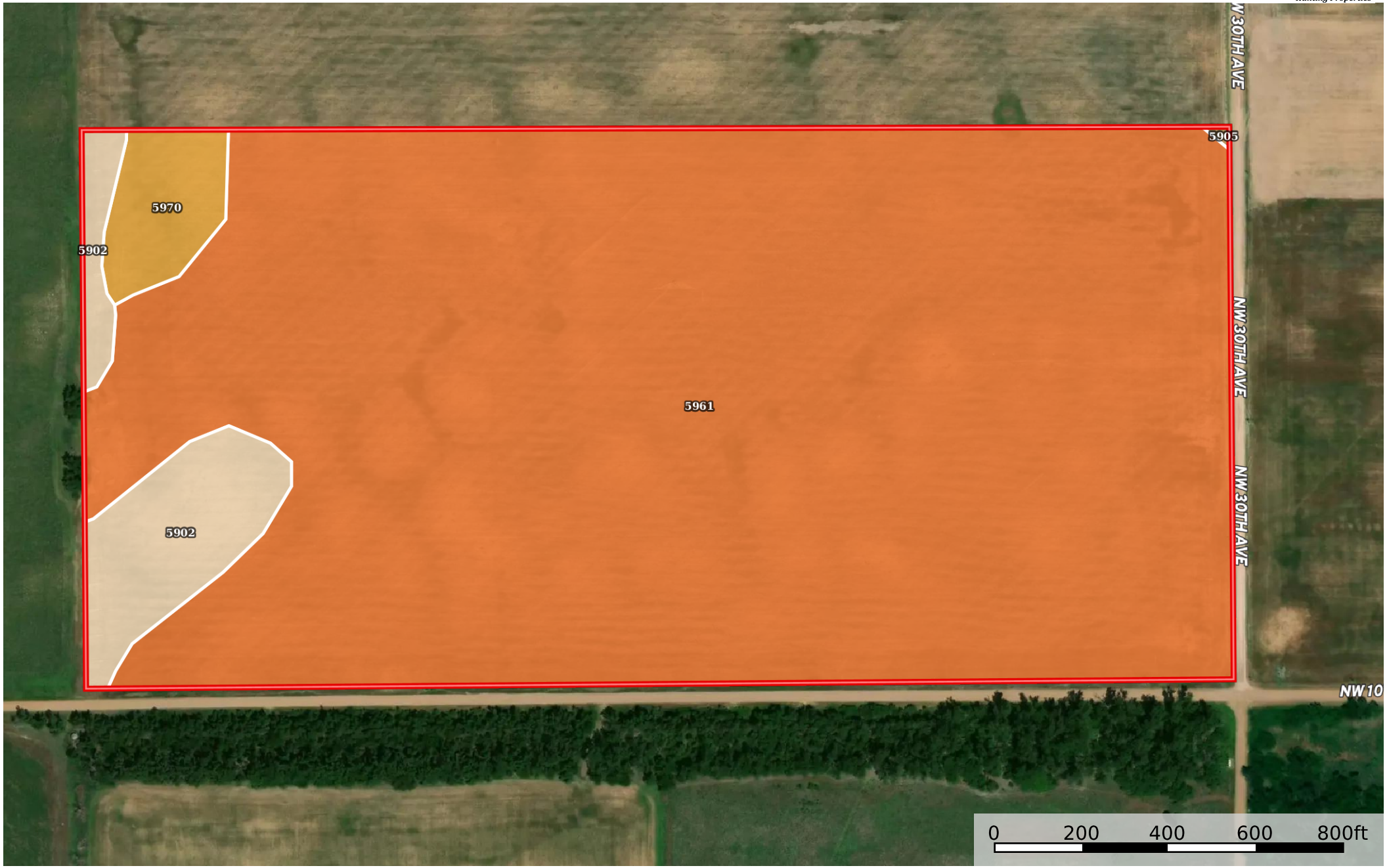


Reichardt 80

Pratt County, Kansas, 80 AC +/-



 Boundary

|  Boundary 77.01 ac

SOIL CODE	SOIL DESCRIPTION	ACRES	%	CPI	NCCPI	CAP
5961	Solvay loamy fine sand, 0 to 2 percent slopes	70.64	91.73	0	50	2e
5902	Hayes fine sandy loam, 1 to 5 percent slopes	4.34	5.64	0	50	3e
5970	Taver loam, 0 to 1 percent slopes	1.99	2.58	0	56	2s
5905	Hayes-Solvay loamy fine sands, 0 to 5 percent slopes	0.04	0.05	0	48	3e
TOTALS		77.01(*)	100%	-	50.15	2.06

(*) Total acres may differ in the second decimal compared to the sum of each acreage soil. This is due to a round error because we only show the acres of each soil with two decimal.

Capability Legend

Increased Limitations and Hazards

Decreased Adaptability and Freedom of Choice Users

Land, Capability

	1	2	3	4	5	6	7	8
'Wild Life'	•	•	•	•	•	•	•	•
Forestry	•	•	•	•	•	•	•	
Limited	•	•	•	•	•	•	•	
Moderate	•	•	•	•	•	•		
Intense	•	•	•	•	•			
Limited	•	•	•	•				
Moderate	•	•	•					
Intense	•	•						
Very Intense	•							

Grazing Cultivation

(c) climatic limitations (e) susceptibility to erosion

(s) soil limitations within the rooting zone (w) excess of water