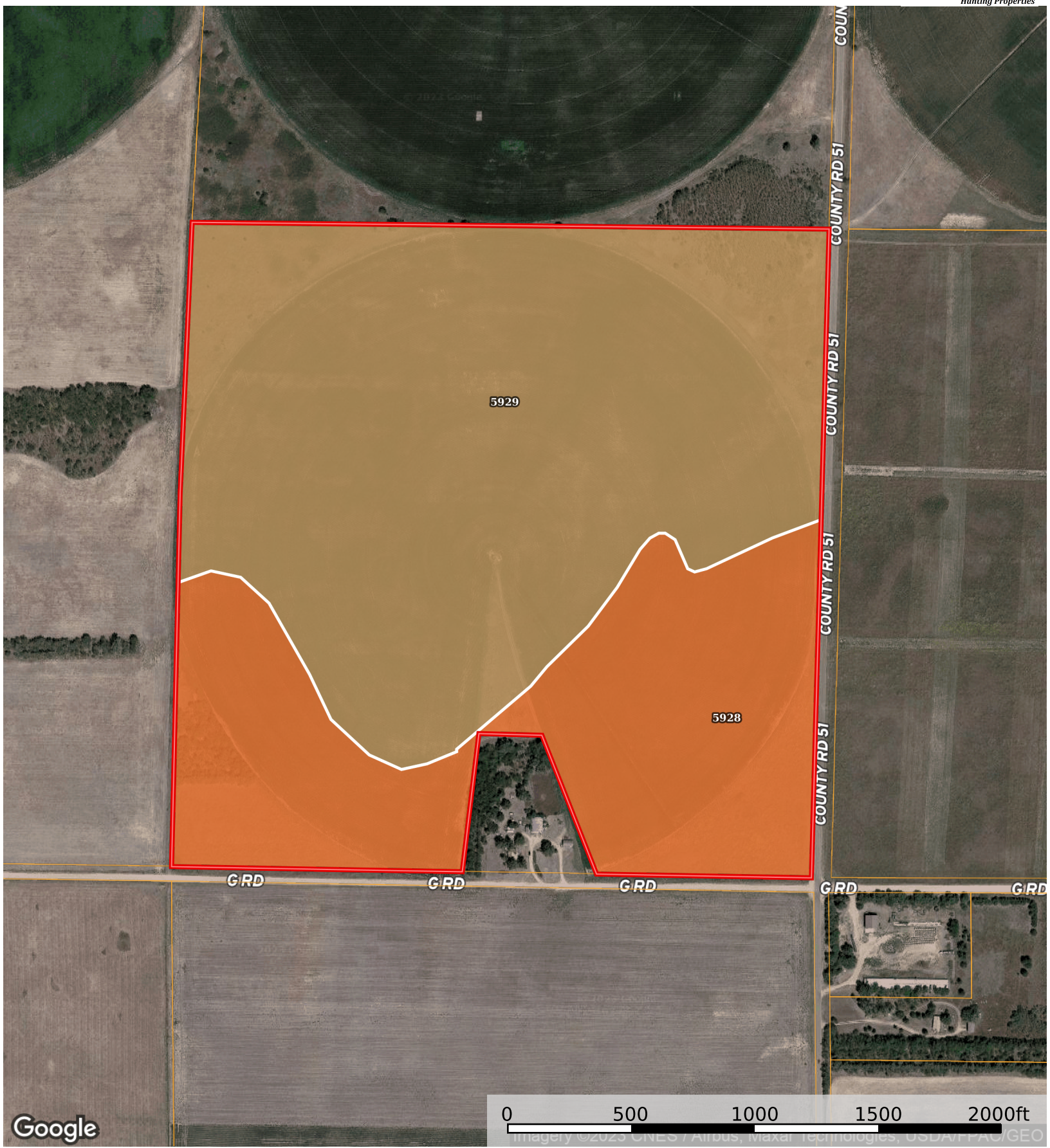


Smitherman

Kiowa County, Kansas, 152 AC +/-

Land Specialists
John Hamm
(620) 450-7491
Kevin Hamm
(620) 770-2381
Dryland - Irrigated
Hunting Properties



Boundary

|  Boundary 151.28 ac

SOIL CODE	SOIL DESCRIPTION	ACRES	%	CPI	NCCPI	CAP
5929	Pratt loamy fine sand, 5 to 12 percent slopes	99.14	65.53	0	31	4e
5928	Pratt loamy fine sand, 1 to 5 percent slopes	52.14	34.47	0	32	3e
TOTALS		151.28(*)	100%	-	31.34	3.66









(*) Total acres may differ in the second decimal compared to the sum of each acreage soil. This is due to a round error because we only show the acres of each soil with two decimal.

Capability Legend

Increased Limitations and Hazards

Decreased Adaptability and Freedom of Choice Users

Land, Capability

								
	1	2	3	4	5	6	7	8
'Wild Life'	•	•	•	•	•	•	•	•
Forestry	•	•	•	•	•	•	•	
Limited	•	•	•	•	•	•	•	
Moderate	•	•	•	•	•	•		
Intense	•	•	•	•	•			
Limited	•	•	•	•				
Moderate	•	•	•					
Intense	•	•						
Very Intense	•							

Grazing Cultivation

(c) climatic limitations (e) susceptibility to erosion

(s) soil limitations within the rooting zone (w) excess of water