

160 +/- Acres Edwards County, KS Land

LAND AUCTION

Wednesday, September 14, 2022, Time: 10:30 am

Online, in Person, and by Phone

SALE WILL BE HELD AT: *Crazy Mule*, 106 Kansas, Greensburg, KS

Seller: Rita Cole

Legal Description: The NW4 of S16-T26-R18, Edwards Co, KS.

Earnest Money: \$20,000.00 on day of sale, balance in Certified Funds on Day of Closing.

Title Insurance & Escrow Agent Closing Fee: 50% Buyer, 50% Seller; Richardson Abstract Co. in Kinsley, KS is the title company.

Taxes: 2021 and any earlier taxes paid by the seller. 2022 Taxes shall be prorated to the date of closing.

FSA Payments: 2022 FSA Payments remain with the Seller. 2023 FSA Payment pass to the Buyer.

Minerals: Pass with the land to the buyer.

Closing: On or Before October 28, 2022.

Located: From Greensburg, go West 1 mile on Highway 400/54 and then North on Highway 183 for 13 miles. At the curve, go east on U Rd for 1 mile. The land begins in the SE corner of the intersection.

The land sale is not subject to financing or appraisal.

Announcements made Day of Sale take precedence over any Internet, faxed, digital, or printed materials.



107 NE State Rd 61
Pratt, KS 67124
(620) 672-6996

www.hammauction.com

John Hamm/Auctioneer

Cell: 620-450-7481

Kevin Hamm/Agent

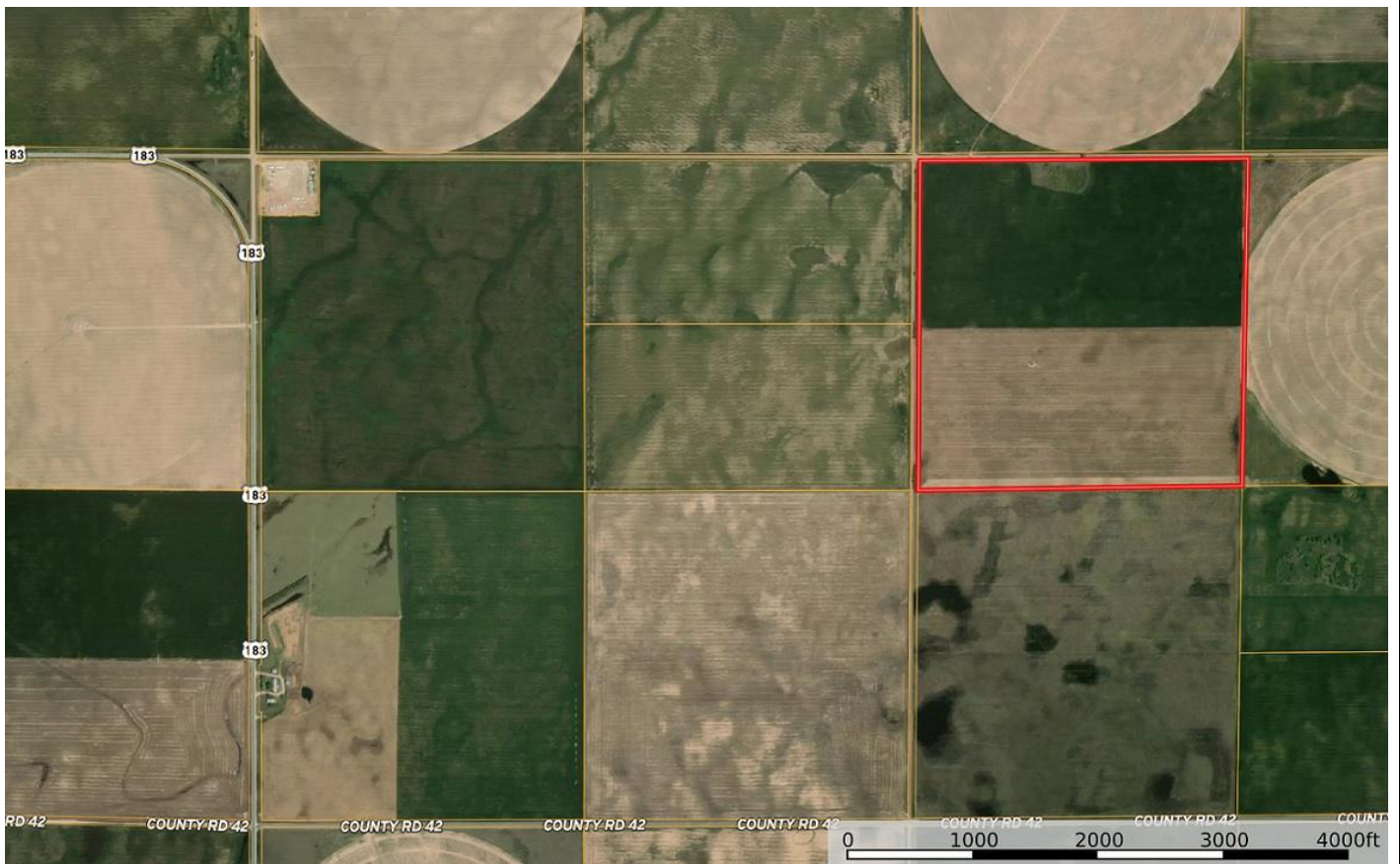
Cell: 620-770-2381



Hamm Auction and Real Estate, LLC.

107 NE SR 61

Pratt, KS. 67124



www.hammauction.com for more pictures and online bidding.